



Concrete Waterproofing System.

Installing Liquid Rubber Waterproof Sealant and Liquid Rubber Smooth Coating is *simple and easy!*

Follow the steps detailed below to ensure a proper installation of your high performance coating.

Surface preparation is the most important step in any successful coating installation.

Liquid Rubber Waterproof Sealant can be applied to most substrates: Including metal, aluminium, wood, some plastics, fiberglass, EPDM, PVC, and bonds well to most coatings.



REQUIRED PRODUCTS

Geo Fabric

- Colour not visible under liquid rubber, less visible than seam tape
- Requires prep process of:
 - ® Painting waterproof sealant over join,
 - ® Embedding geofabric into wet sealant,
 - ® Top coat of waterproof sealant
- Ideal for porous substrates
- Streamlined final appearance
- Cost effective
- 20m length x 100mm, or 100m length x 100mm wide.

Followed by

Undercoat of **Liquid Rubber Waterproof Sealant**

- Brown, cures to black
- Tensile strength – 2000PSI
- Elongation/elasticity – 900%
- Available in 1L, 4L, 10L, 20L
- 1L / 2-2.5m²

Followed by

Top coat of **Liquid Rubber Smooth Coat**

- Light grey
- Can be tinted to any colour on request
- Elongation – 300-400%
- Hardness – 72 Shore A
- Available in 4L 10L, 15L

Accessories and pre-treatments:

- Application Brush
- Rapid Application Kit – 1 Roller, 1 Brush, 1 Tray, 2 Roller Sleeves
- COHE Quick Clean – 1L, 5L, 20L



Concrete Waterproofing System.

Inspection

Ensure a satisfactory surface for application and inspect the soundness of the existing substrate.

Confirm the Roof drainage is satisfactory and functioning properly.

If an existing coating is present, determine the compatibility by testing a small area with waterproof sealant.

Ensure there is no moisture trapped in the substrate before coating. Inspections should be performed regularly to identify small problems before they become big problems.

Preparation

Treat any moss or mould with COHE Quick Clean.

Remove any contaminants such as silicone, oil, grease flaking paint, dirt, dust.

Clean the surface using a high-pressure hose or water blaster to remove all contaminants. Allow to fully dry – surface must be completely free of moisture before application of any of our products.

Tape off areas you do not want any sealant applied to.

Geo Tape

- 1) Apply base layer of waterproof sealant to joints or cracks, 90° angles or around any rood protrusions.
- 2) Embed Geo Fabric into wet sealant
- 3) Then apply top coat of waterproof sealant, ensuring air bubbles are removed and fabric is smooth and level
- 4) Leave to cure minimum 24 hours before moving onto next step

Application

Apply **Waterproof Sealant** using either brush or roller to achieve an even 1mm thickness across surface.

Apply two coats if applying to porous surface or requiring a greater thickness

Once applied, leave to cure for 4-6 hours before surface can be walked on.

After 72 hours, you can apply **Smooth coating** to waterproof sealant if exposed to UV

Apply 2 coats of **Smooth coating** at around 1L/3sqm per coat, waiting a minimum of 12 hours between coats.

Post-Application Clean-Up

Set out a tarp or large piece of cardboard to keep pails and tools on, when not in use. Make sure you have a pail of soap and water, rags and mineral spirits on hand so you are ready when an accident occurs. Soak up as much material as possible with rags.

Clean immediately with soap and water. If dried, scrape off as much as you can. (with a razor/scrapper/etc.) Use mineral spirits to weaken the material and an appropriate tool to mechanically remove (wire brush, grinder, etc.)

Warning: Mineral spirits can spread the stain, be sure to use sparingly, and to follow the manufacturers safety recommendations.

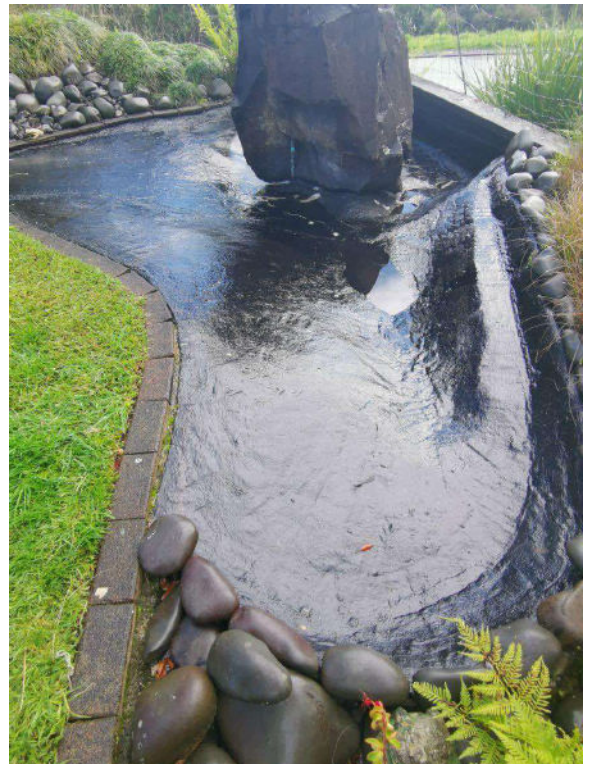
Refer to the product Safety Data Sheet for personal protective equipment recommendation



Concrete Waterproofing System.

Application tips

- Remove painters tape while coating is still wet.
- Apply to dry surface that is free of dirt, loose paint, rust, oil, grease, coal tar, or other contaminants.
- Apply each new coat in an alternate direction to the previous coat to ensure even thickness.
- Typically cures within 48-72 hours.
- Avoid contact with solvents and solvent based cleaners, adhesives, and paints.
- Do not allow to freeze.
- Do not apply in wet conditions (including fog and dew) or if rain is forecasted within 24 hours.
- Apply when ambient temperature is between 10-25°C
- Do not apply in direct intense sunlight



The information contained herein is the best available to Cohe Group Ltd and its affiliated companies relating to our products and the use of our products. It is based on tests believed to be reliable. Cohe Ltd Ltd assumes no liability for any damages incurred in association with the use of Liquid Rubber Waterproof Sealant or Smooth Coating. Information is subject to change without notice.



0508 SEAL IT (732 548)

info@cohe.co.nz

www.cohe.co.nz



PROUDLY NZ MADE