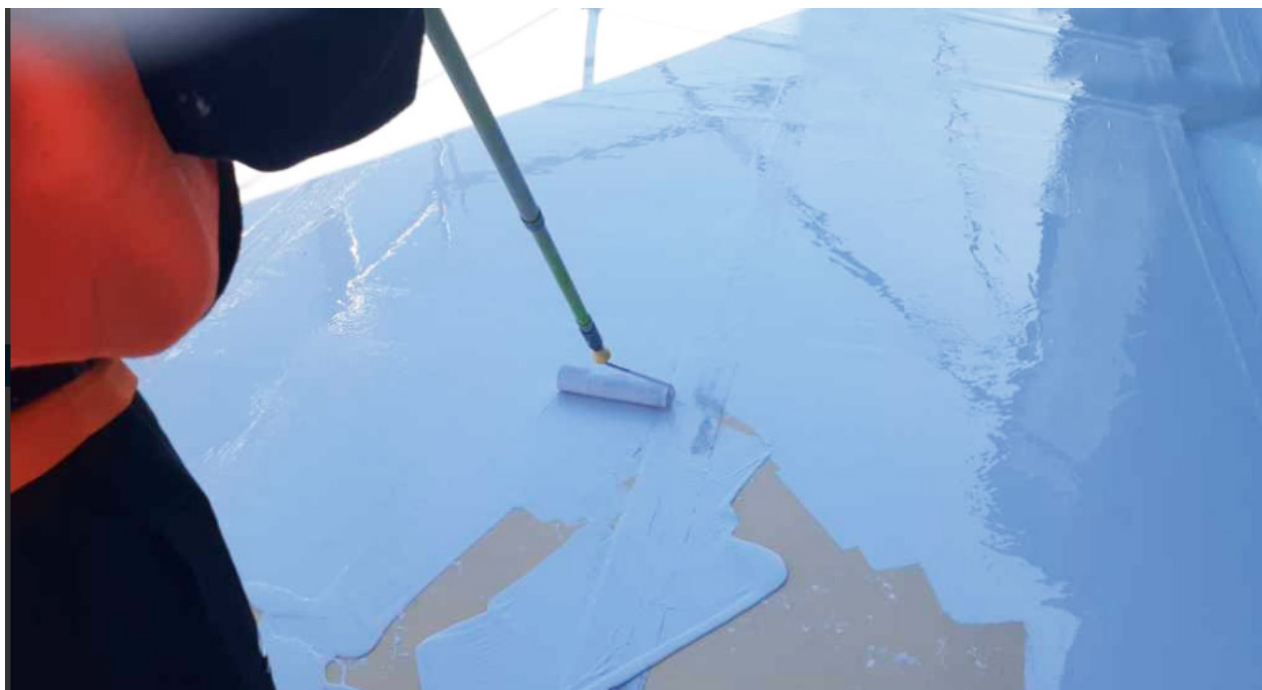


# QUICK *2* SEAL

FAST CURING, TOUGH WEARING  
WATERPROOFING MEMBRANE



Technical Data Sheet

---



## Product Benefits

**Quick 2-Seal Two Pack Flexible Self Priming** waterproofing membrane designed for application to decks, roofs, pipe lining, walls and gutters, that require toughness, UV stability and a high degree of protection from water ingress.

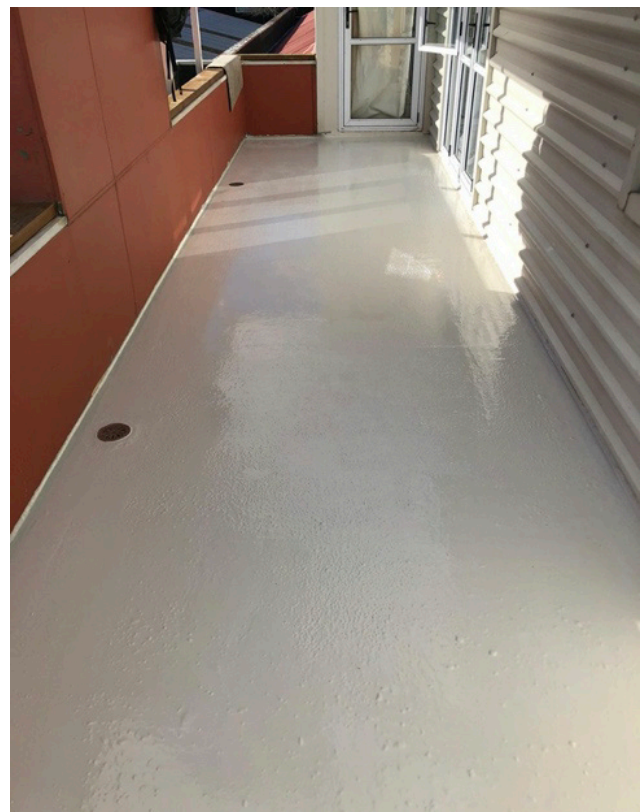
**Quick 2-Seal is a zero VOC product suitable for most substrates.**

**Intended Uses:** As a high performance chemical resistant sealer, protective coating over substrates subject to flexing, weather, harsh environments and chemicals.

## Practical Information

**Thinning:** Special solvent blend

Drying Time	Temperature °C	Touch Dry	Hard Dry	Overcoating Time with Self
	10 °C	3 hours	6 hours	16 hours
	20 °C	1.5 hours	4 hours	12 hours
	25 °C	1 hours	3 hours	6 hours



## Surface Protection

See guide Specifications for detailed information.

All surfaces to be coated should be clean, dry and sound. Prior to paint application, all steel surfaces should be assessed and treated in accordance with ISO 8504:2000.

**Quick 2-Seal** may be applied over galvanizing, butyl rubber (when cleaned thoroughly), STPU and STPE sealer coats when used as waterproofing membranes and properly installed, fiberglass, acrylics, aluminum, dry timber and PVC. If any doubt over suitability of a substrate for Quick 2-Seal, it is highly recommended to do a test area and an adhesion test after 24 hours of product curing.

## Application

**Mixing:** This material is a two-component coating system and should always be thoroughly mixed before application in the correct ratio.

**Mix Ratio:** 10.0Kg of Part A to 6.07 Kg of Part B – may be diluted to application viscosity after mixing both components. Roller application with an 8mm nap will require 0.2L of solvent blend per kit and will then cover 1.2 sqm/Kit per coat – giving an DFT of 700 microns per coat.

**Airless Spray:** Tip range 19-25 thou, 2500 psi

**Brush:** Suitable for small areas – multiple coats may be needed to achieve the required dft.

**Roller:** Suitable for small areas Typically 800 microns wet film per coat.

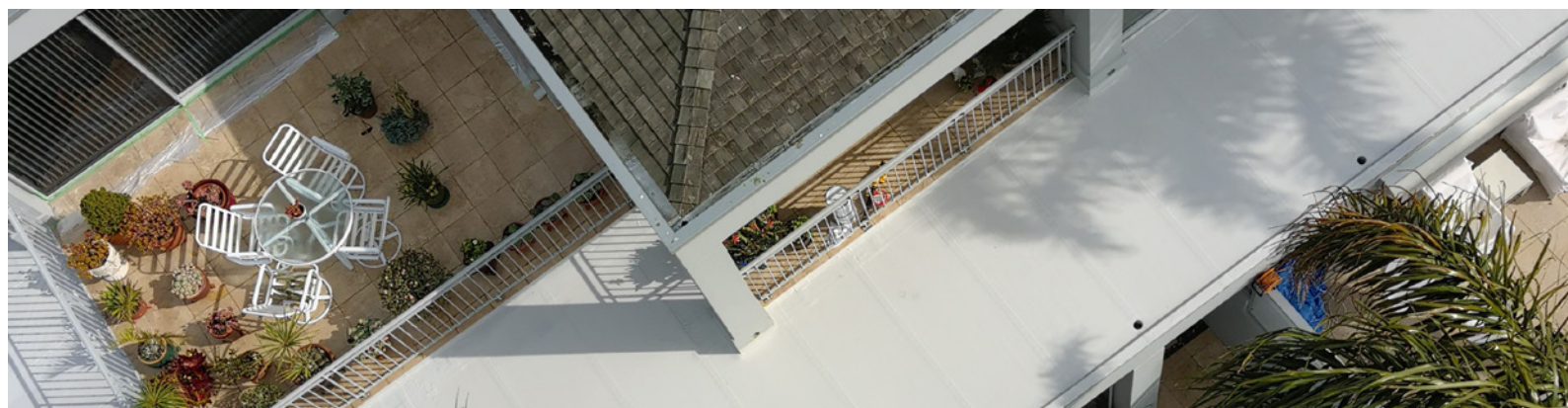
**Thinner:** Special solvent blend.

**Clean up:** Hexane or DMF.

**Pot life:** Once mixed Quick 2-Seal will remain workable for 1 – 1 1/2 hours, mix in the supplied containers to avoid seeding of the product with partially cured material.

**Work Stoppages:** Do not allow material to remain in hoses or spray equipment for more than 60 minutes.  
All unused material should be stored in tightly closed containers.  
Use a FIFO stock control.

**Clean up:** Clean all equipment immediately after use. It is good working practice to periodically flush out spray equipment during the course of the day.  
All surplus materials and empty containers should be disposed of in accordance with appropriate regional regulations/legislations.



## Product Characteristics

<b>Resin Type:</b>	High Performance polyurethane acrylic
<b>Solvent type:</b>	Water
<b>pH:</b>	NA
<b>Viscosity:</b>	90,000 to 120,000 cPs
<b>Acid Value:</b>	Zero
<b>Colour:</b>	White or concrete grey (Available in most colours)
<b>Specific Gravity:</b>	1.37 g/cc (typical white base)
<b>Elongation:</b>	300-400%
<b>VOC:</b>	<0.01g/L

## Precautions

Quick 2-Seal is intended for use only by professional applicators in industrial situations in accordance with industry best practices.

All work involving the use and application of this product should be performed in compliance with all relevant national Health, Safety and Environmental standards and regulations.

## Packaging

9L Volume Part A  
6L Volume Part B  
16.09 Kg Weight

Shelf life = 12 months in original unopened packaging





Hawke's Bay 4130  
New Zealand

0508 Seal It (732 548)  
[info@cohe.co.nz](mailto:info@cohe.co.nz)  
[www.cohe.co.nz](http://www.cohe.co.nz)